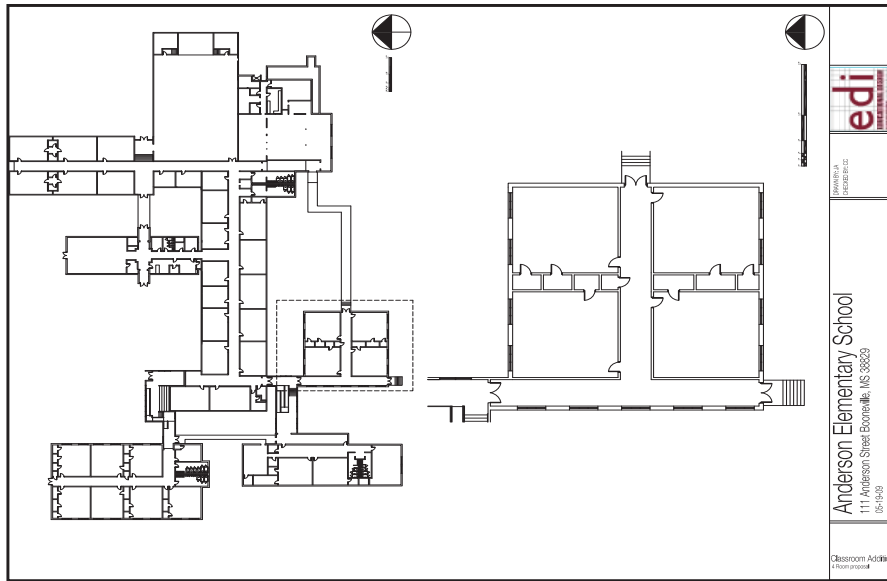
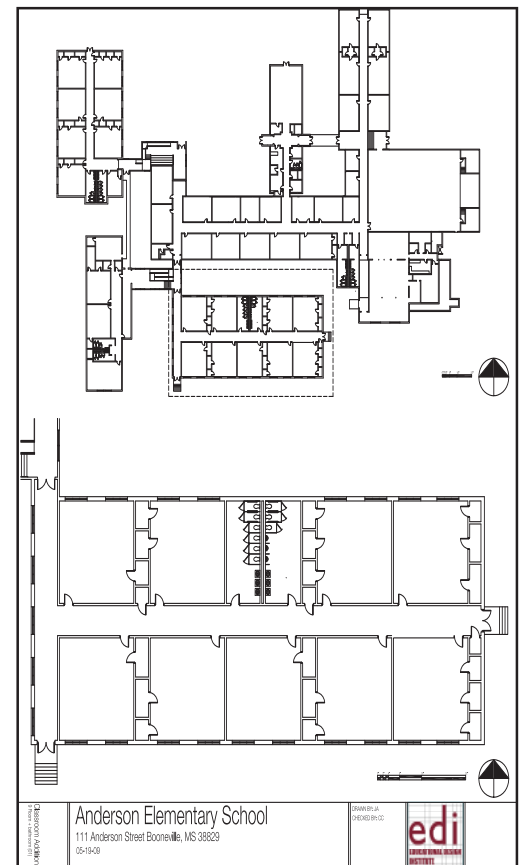
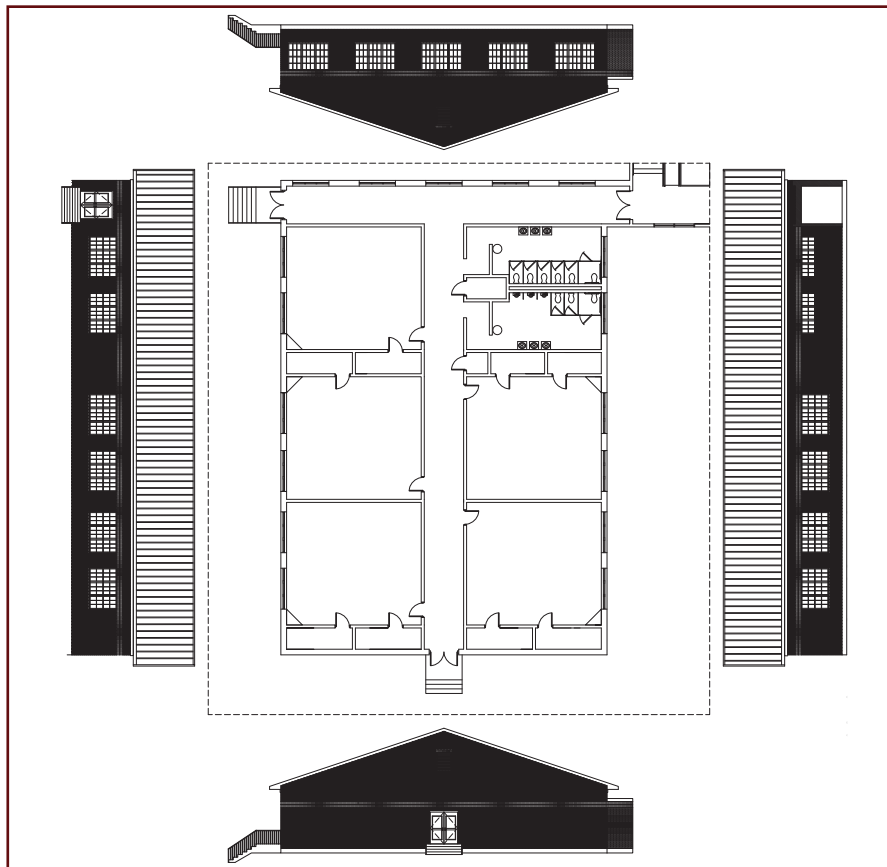


Boonville Classroom Addition

Standard
2008



EDI was asked to master plan an addition to the Anderson Elementary School campus. The design calls for an addition which includes five classrooms and new restrooms. The placement of the current addition leaves space for a future four-classroom addition, which is designed to “complete” the campus.



Educational Design Institute

Giles Hall - #106
Mississippi State University
P.O. Box AQ, MS 39762

Phone: (662) 325-9225
Fax: (662) 325-8872
www.edi.msstate.edu



MISSISSIPPI STATE
UNIVERSITY